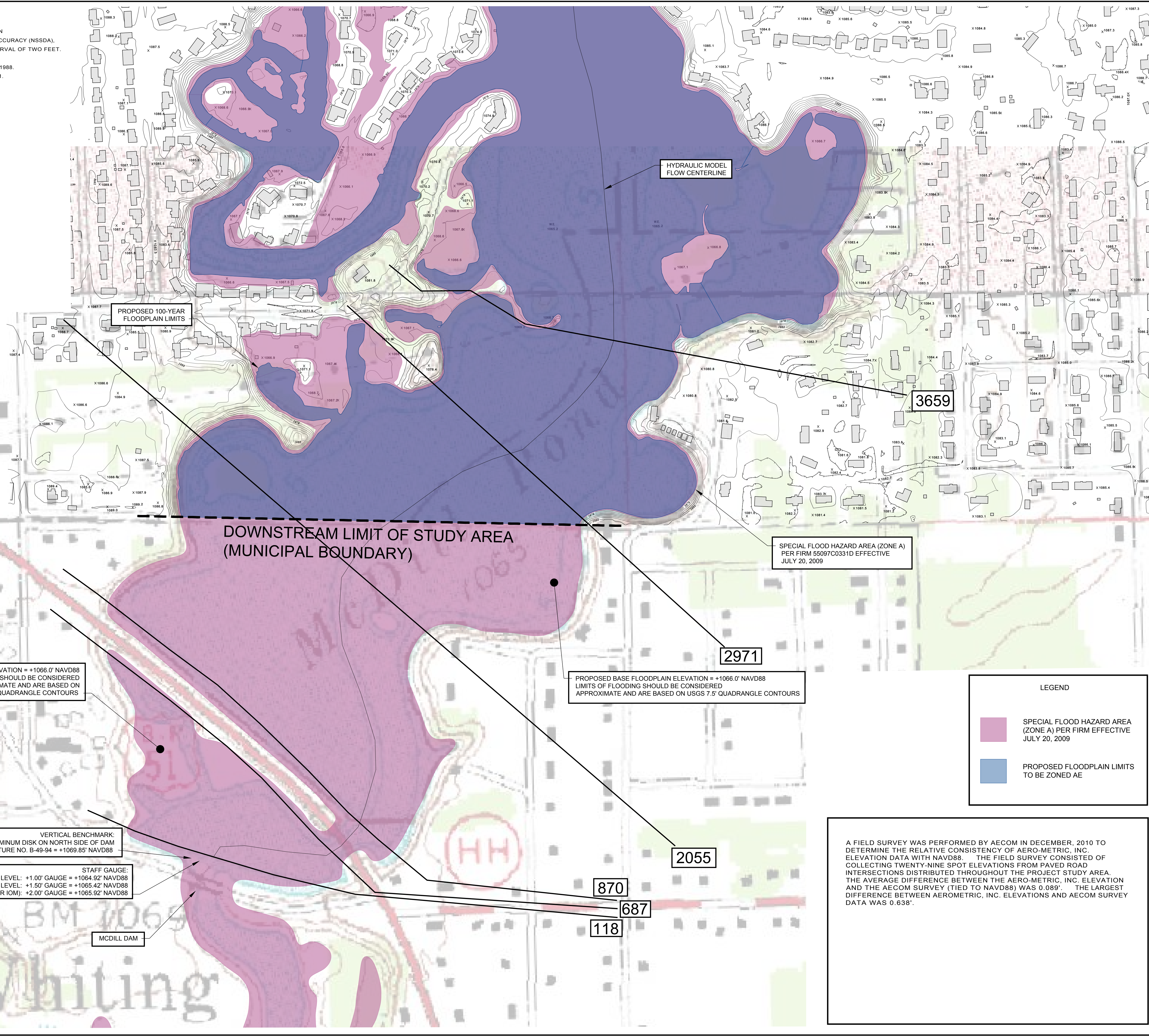
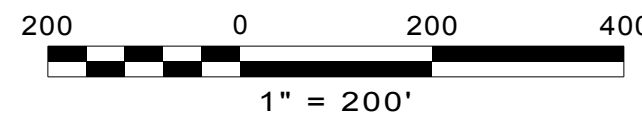
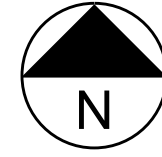


THIS MAPPING HAS BEEN PRODUCED ACCORDING TO PROCEDURES THAT HAVE BEEN DEMONSTRATED TO COMPLY WITH THE NATIONAL STANDARD FOR SPATIAL DATA ACCURACY (NSSDA), FOR A TARGET HORIZONTAL SCALE OF 1"=100' AND A SPECIFIED CONTOUR INTERVAL OF TWO FEET. FIELD CHECKING OF THIS MAP IS RECOMMENDED BEFORE USE.
 TWO FOOT CONTOUR INTERVAL BASED ON NORTH AMERICAN VERTICAL DATUM OF 1988.
 HORIZONTAL DATUM BASED ON PORTAGE COUNTY COORDINATE SYSTEM, NAD 83/91.
 DATE OF PHOTOGRAPHY: 4-7-05
 AERO-METRIC, INC. PROJECT NO. 1050322

NOTE: DASHED CONTOURS INDICATE APPROXIMATE ELEVATIONS AS DEFINED IN PARAGRAPH 7.1.3.6 OF THE MANUAL OF PHOTOGRAMMETRY, 4TH EDITION



PROPOSED BASE FLOODPLAIN ELEVATION = +1066.0' NAVD88
 LIMITS OF FLOODING SHOULD BE CONSIDERED APPROXIMATE AND ARE BASED ON USGS 7.5' QUADRANGLE CONTOURS

PROPOSED BASE FLOODPLAIN ELEVATION = +1066.0' NAVD88
 LIMITS OF FLOODING SHOULD BE CONSIDERED APPROXIMATE AND ARE BASED ON USGS 7.5' QUADRANGLE CONTOURS

VERTICAL BENCHMARK:
 ALUMINUM DISK ON NORTH SIDE OF DAM
 STRUCTURE NO. B-49-94 = +1069.85' NAVD88

STAFF GAUGE:
 NORMAL WATER LEVEL: +1.00' GAUGE = +1064.92' NAVD88
 OPERATING PEAK WATER LEVEL: +1.50' GAUGE = +1065.42' NAVD88
 INITIATE EMERGENCY RESPONSE (PER IOM): +2.00' GAUGE = +1065.92' NAVD88

SPECIAL FLOOD HAZARD AREA (ZONE A)
 PER FIRM 55097C0331D EFFECTIVE
 JULY 20, 2009

LEGEND

- SPECIAL FLOOD HAZARD AREA (ZONE A) PER FIRM EFFECTIVE JULY 20, 2009
- PROPOSED FLOODPLAIN LIMITS TO BE ZONED AE

A FIELD SURVEY WAS PERFORMED BY AECOM IN DECEMBER, 2010 TO DETERMINE THE RELATIVE CONSISTENCY OF AERO-METRIC, INC. ELEVATION DATA WITH NAVD88. THE FIELD SURVEY CONSISTED OF COLLECTING TWENTY-NINE SPOT ELEVATIONS FROM PAVED ROAD INTERSECTIONS DISTRIBUTED THROUGHOUT THE PROJECT STUDY AREA. THE AVERAGE DIFFERENCE BETWEEN THE AERO-METRIC, INC. ELEVATION AND THE AECOM SURVEY (TIED TO NAVD88) WAS 0.089'. THE LARGEST DIFFERENCE BETWEEN AEROMETRIC, INC. ELEVATIONS AND AECOM SURVEY DATA WAS 0.638'.

11425 West Lake Park Drive
 Milwaukee, WI 53224
 414.359.3030
 www.aecom.com
 Copyright © 2010 AECOM, Inc.

CITY OF STEVENS POINT
 MCDILL DAM AND POND FLOODPLAIN MAPPING
 STEVENS POINT, WI 54881
 100-YEAR FLOODPLAIN MAP COMPARISON

Issued

| Rev | Date | Description |
|-----|------|-------------|
| | | |
| | | |
| | | |
| | | |
| | | |
| | | |
| | | |
| | | |
| | | |

PROJECT NUMBER
 60148055
 SHEET REFERENCE NUMBER

X:\PROJECTS\60148055\dwg\Gis01c_annotated_firm_5.dwg: 3/24/2009 2:41:24 PM: DIEMER, PETER J.: STS.sab